

RFP 45 DECT Base Station

A Versatile SIP-DECT Multi-Cellular Base Station

Key Features

- New modern design!
- 40% smaller size compared to the RFP35
- New hardware design to natively run the OMM for up to 1024 users/handsets
- New mounting bracket design for easy installation
- Optional customizable front cover plate for discrete installation or décor matching
- 8 simultaneous voice channel support
- No license required for up to 5 base-station deployments
- Over-the-Air synchronization



The RFP45 DECT Base Station is a core component of Mitel's SIP-DECT Multi-cellular enterprise grade wireless solution that provides seamless communication across wide areas. With its compact and modern design, the RFP45 is smaller than previous models without compromising performance. This base station is versatile enough to be used in small retail environments or in larger deployments like office buildings, hospitals, hotels, and cruise ships.

The RFP45 hardware has been upgraded and is powerful enough to natively host the SIP-DECT Open-Mobility-Manager (OMM) provisioning and SIP software for deployments up to 1024 users/handsets. End customers will be able to run Mitel's SIP-DECT solution without purchasing extra hardware equipment for core communication and basic messaging capabilities. Coupled with Mitel's simple licensing approach, the RFP45 provides excellent value for customers that want to transition and expand their wireless solutions at their own pace.

Secure & Resilient

The RFP45 can operate in active or backup mode to provide reliable communication. When combined with Mitel's Multiple OMM (MOM), redundancy features provide continued voice service during various types of WAN and campus LAN outages.

Customizable Hardware

The RFP45 supports an optional customizable plastic cover plate for customers to match branding, business décor, or color schemes. A charcoal version will be offered for customers requiring a more discrete installation.

GENERAL INFORMATION

- Requires SIP-DECT 8.0 software or higher
- Replaces the RFP32 / RFP35
- Centralized DECT & SIP configuration, clustering administration via separate Open Mobility Manager (OMM) provisioning and SIP software
- Supports natively running the OMM provisioning application for installations up to 256 RFPs and 1024 handsets/users.
- Simplified Licensing. No base-station licenses required for up to 5 base-station deployments
- Supports Messaging and Alarms

DECT FEATURES

- All DECT channels supported for maximum use of the DECT capacity (120 duplex channels in EMEA, 50 in US/CAN)
- 12 channel base station with support for 8 simultaneous voice channels per RFP and 4 channels for switching purposes
- GAP standard supported
- Handover and Roaming support
- DSAA authentication between base and handset
- Support of DECT encryption
- Integrated DECT dipole antenna
- Supports Enhanced DECT security
- DECT XQ technology for minimization of interferences in reflecting environments
- Supports Over-the-Air DECT Handset software upgrades
- Supports Over-the-Air Synchronization

INSTALLATION

- New separate mounting bracket to ease installation and wire routing needs
- Supports wall-mount & ceiling-mount
- 1 LED to signal current operating state
- Powered via IEEE 802.3af PoE (Class 2)

NETWORKING

- 1 x IEEE 802.3 10/100BaseT
- 802.3af Power-over-Ethernet (Class 2)
- VLAN Support
- 802.1x Support
- QoS supported by Diffserv / ToS
- NTP time synchronization support

VOIP

- Connect to IP PBX via LAN
- SIP protocol support per RFC 3261
- Secure SIP over TLS, SRTP
- G.711, G.722, G.729ab1 codecs support
- Adaptive jitter compensation
- Echo cancellation / suppression
- Voice Activity Detection
- Comfort Noise Generation

TECHNICAL DATA

- Colour: White
- Dimensions (W x H x D):
 - 150 x 150 x 40 mm
- Weight: 327 g
- Material: ABS
- Connectors:
 - 1 x RJ45 Ethernet Jack
 - Reset Button
- MTBF Rate: 40 years
- Operating Voltage: 37 VDC min and 57 VDC max
- Current consumption: 85 mA at 55VDC
- Type of ingress protection: IP 20
- Flame resistance UL94 HB
- DECT Frequencies
 - Europe, Middle East
 - Australia, New Zealand
 - North America
 - South America

ENVIRONMENTAL

- *RFP Operational:*
 - *Temperature -10°C to +45°C*
 - *Humidity 34% at +45°C*
 - *Humidity 95% at +29°C*
- *Storage:*
 - *Temperature -40°C to +70°C*
 - *Humidity 15% at +70°C*
 - *Humidity 95% at +29°C*

REGULATORY STANDARDS

EMC/RADIO

- *European Union:*
 - *2014/53/EU (RED)*
 - *2011/65/EU (RoHS)*
 - *EN 301-489-1, 6*
 - *EN 301 406*
 - *EN 50385*
 - *EN 60945:2002 (Clause 1C, EMC only)*
- *Canada:*
 - *ICES-003 (Class B)*
 - *RSS-GEN*
 - *RSS-213 (DECT)*
- *USA: CFR Title 47, Part 15 (Class B)*
 - *FCC Part 15 Subpart C*
 - *(DECT) FCC Part 15 Subpart D*
- *Australia / New Zealand:*
 - *AS/NZS 4771*

SAFETY

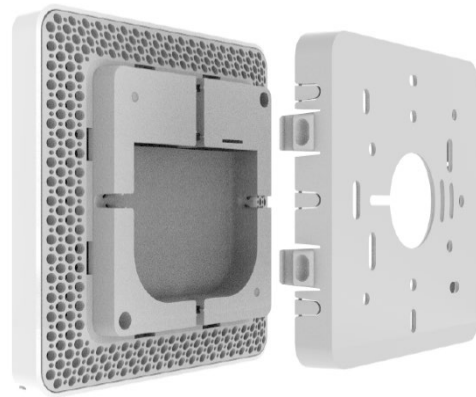
- *Canada: CAN/CSA C22.2 NO. 60950-1*
- *USA: UL 60950-1*
- *European Union: EN 60950-1*
- *Australia/New Zealand: AS/NZS 60950-1*

INCLUDED IN THE BOX

- *RFP45 Base Station*
- *Mounting Bracket, 2 screws & screw anchor*
- *Circular Mitel Logo Plate*
- *Installation & regulatory documents*

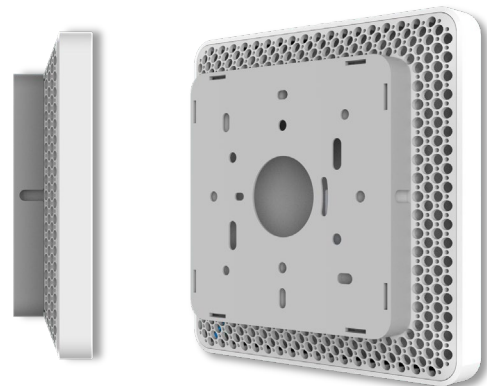
PART NUMBERS

Model	Part Number
RFP 45 Base Station	50006972
48VDC Ethernet Pwr Adapter 100-240V 802.3af (Optional)	51015131



RFP45 Rear View

Mounting Bracket



RFP45 Side View

RFP45 with Mounting
Bracket attached